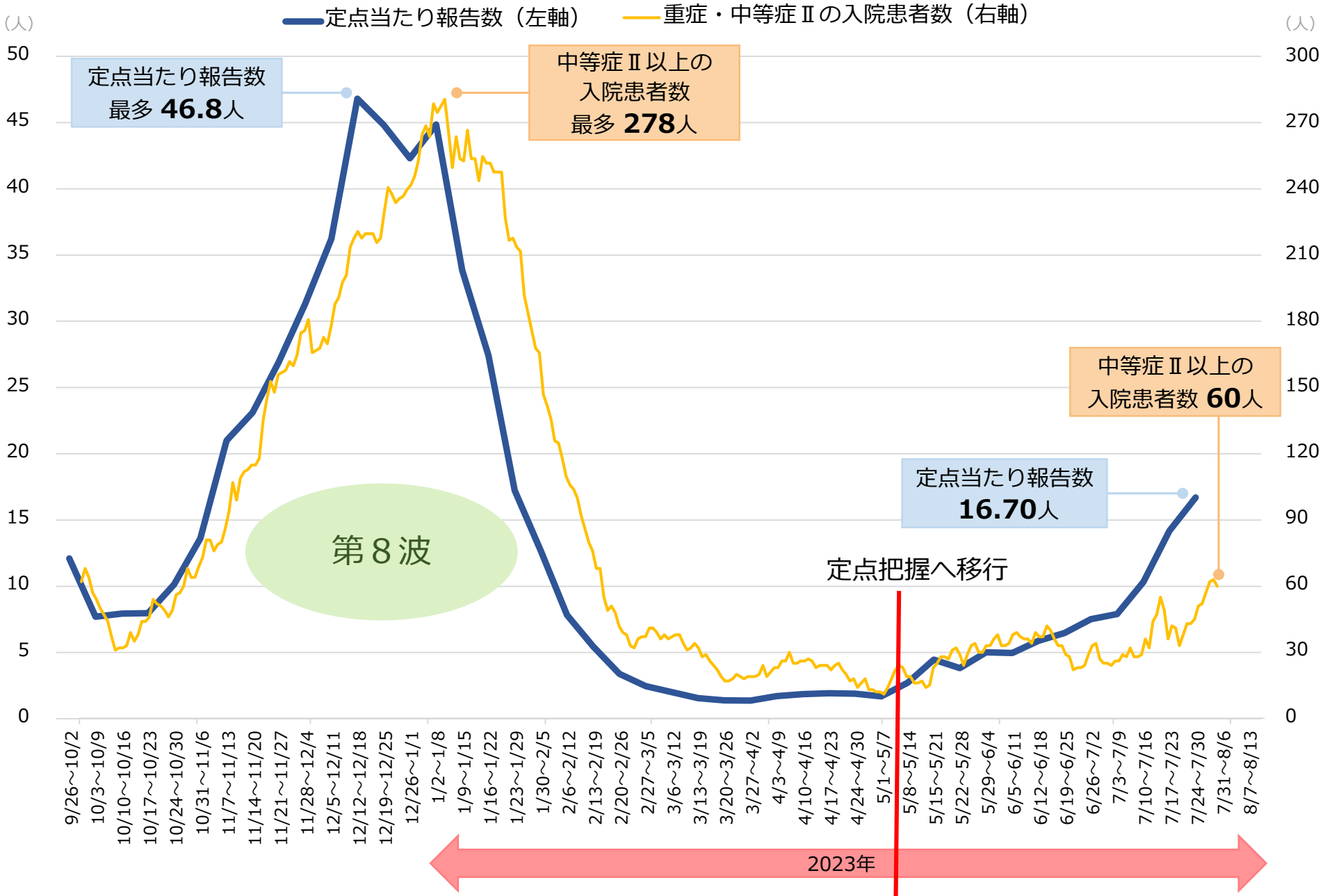
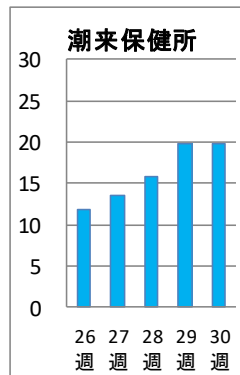
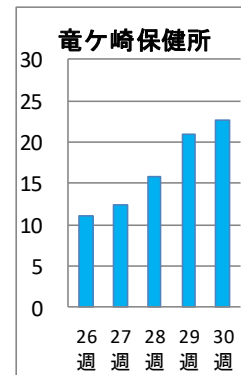
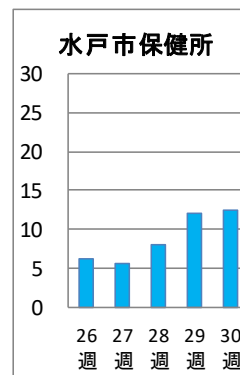
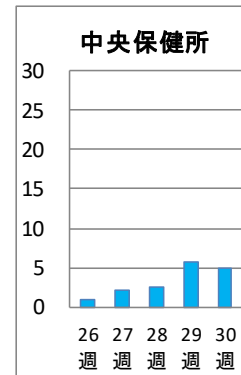
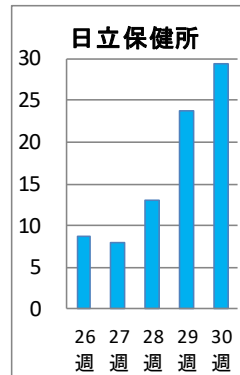
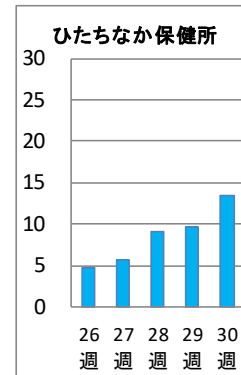
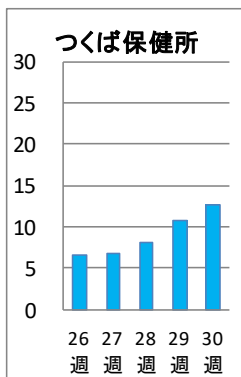
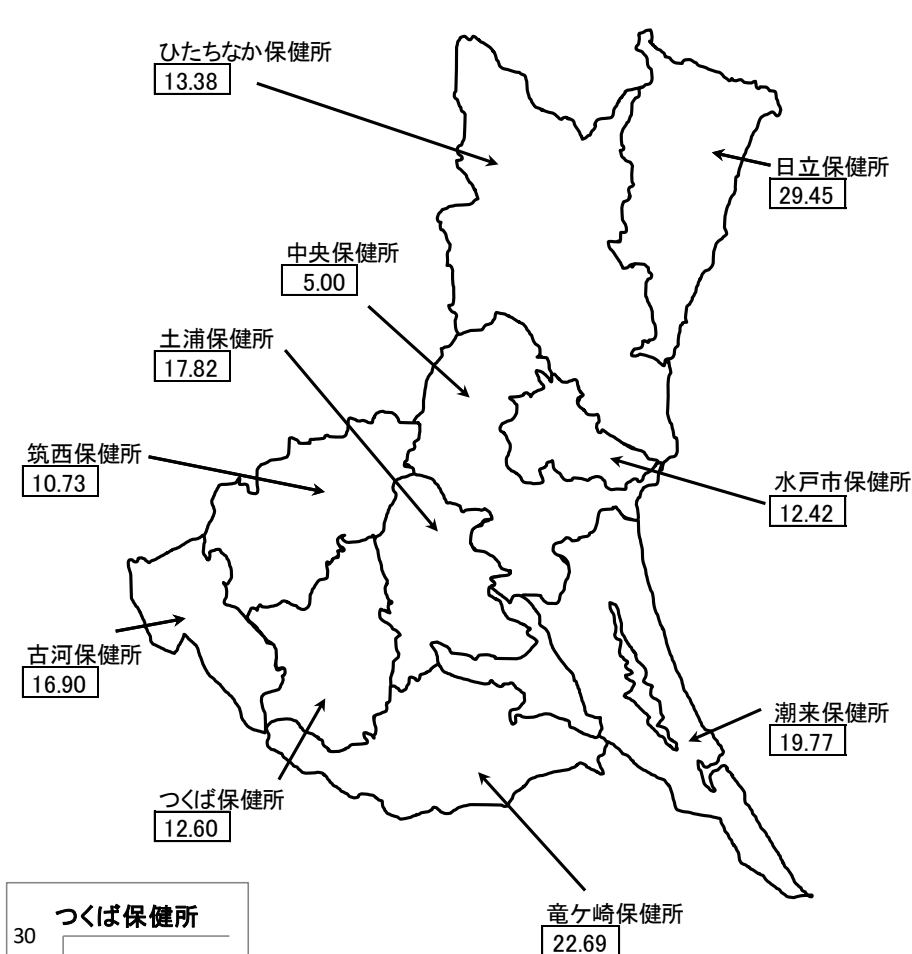
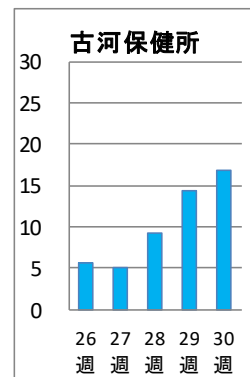
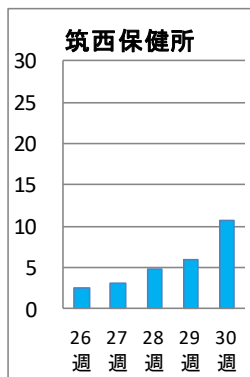
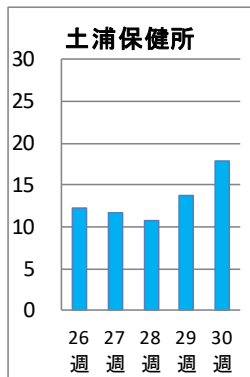


定点当たりの報告数・中等症Ⅱ以上の入院患者数の推移

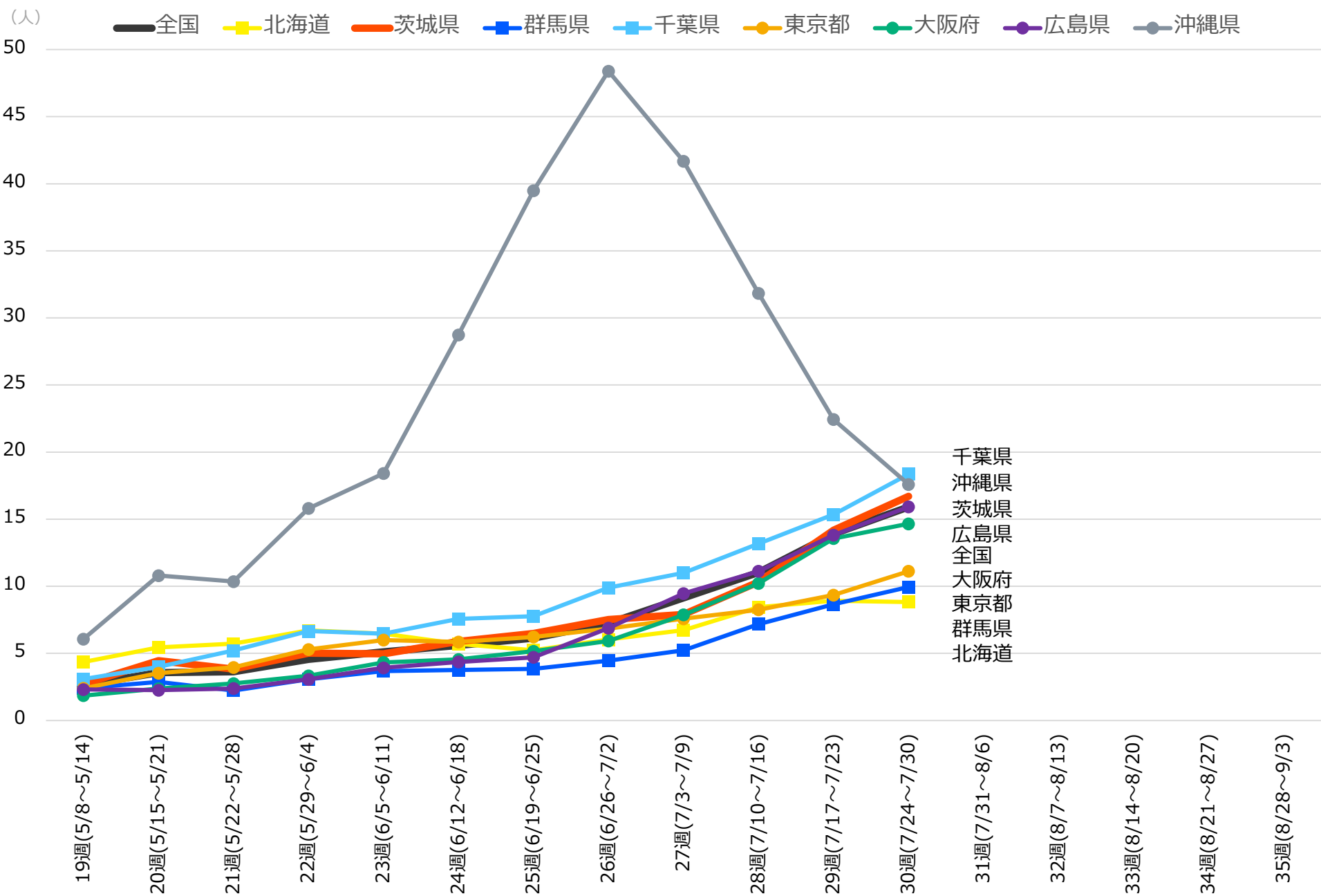


保健所別の「定点当たりの報告数」の推移



※値は速報値です。今後数値に若干の変更が生じる場合があります。

一部都道府県の「定点当たり報告数」の推移 (厚労省の公表データを基に作成)



千葉県
 沖縄県
 茨城県
 広島県
 全国
 大阪府
 東京都
 群馬県
 北海道